

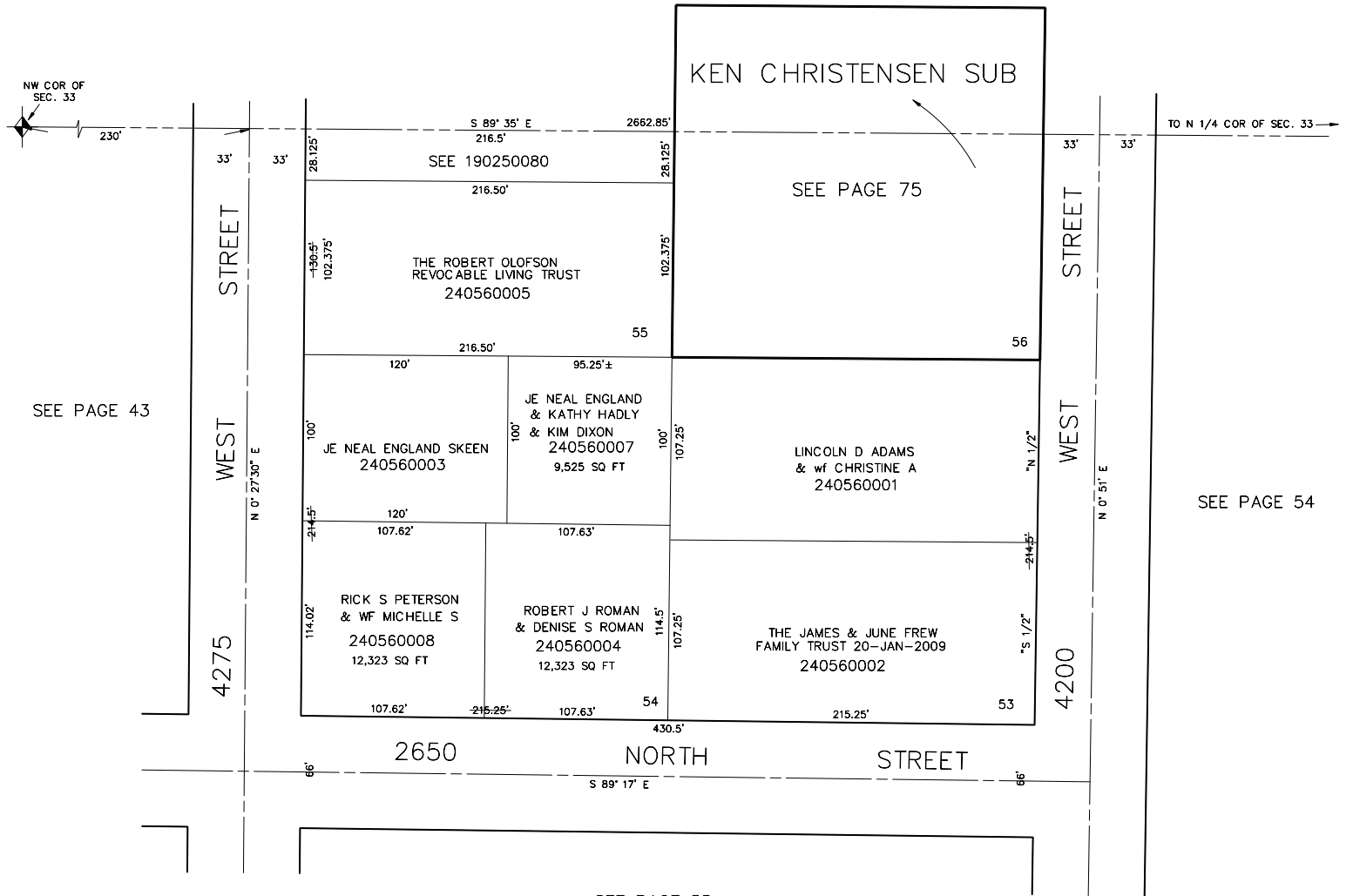
PART OF N.W. 1/4, SEC. 33, T.7N., R.2W., S.L.B. & M.

PLAIN CITY
LOTS 53 TO 56, PLAT B

TAXING UNIT: 21

SCALE 1" = 50'

SEE BOOK 19, PAGE 25



SEE PAGE 43

SEE PAGE 54

SEE PAGE 55

SEE ORIGINAL DEDICATION
PLAT OF PLAIN CITY IN
BOOK 5, PAGE 80 OF RECORDS.